

Packing List

In addition to this guide, the package includes the following items:



(P)ET-2255 / (P)ET-2255-32 X 1

Quick Start x1

Technical Support

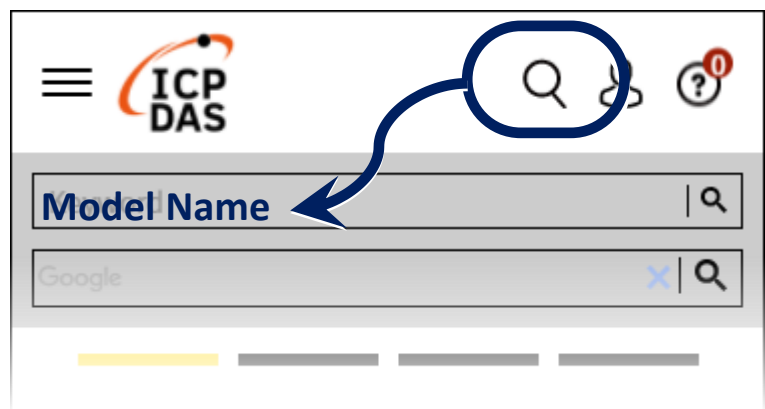
service@icpdas.com

www.icpdas.com

Resources

How to search for drivers, manuals and spec information on ICP DAS website.

- For Mobile Web



- For Desktop Web

1 Connecting the Power and Host PC

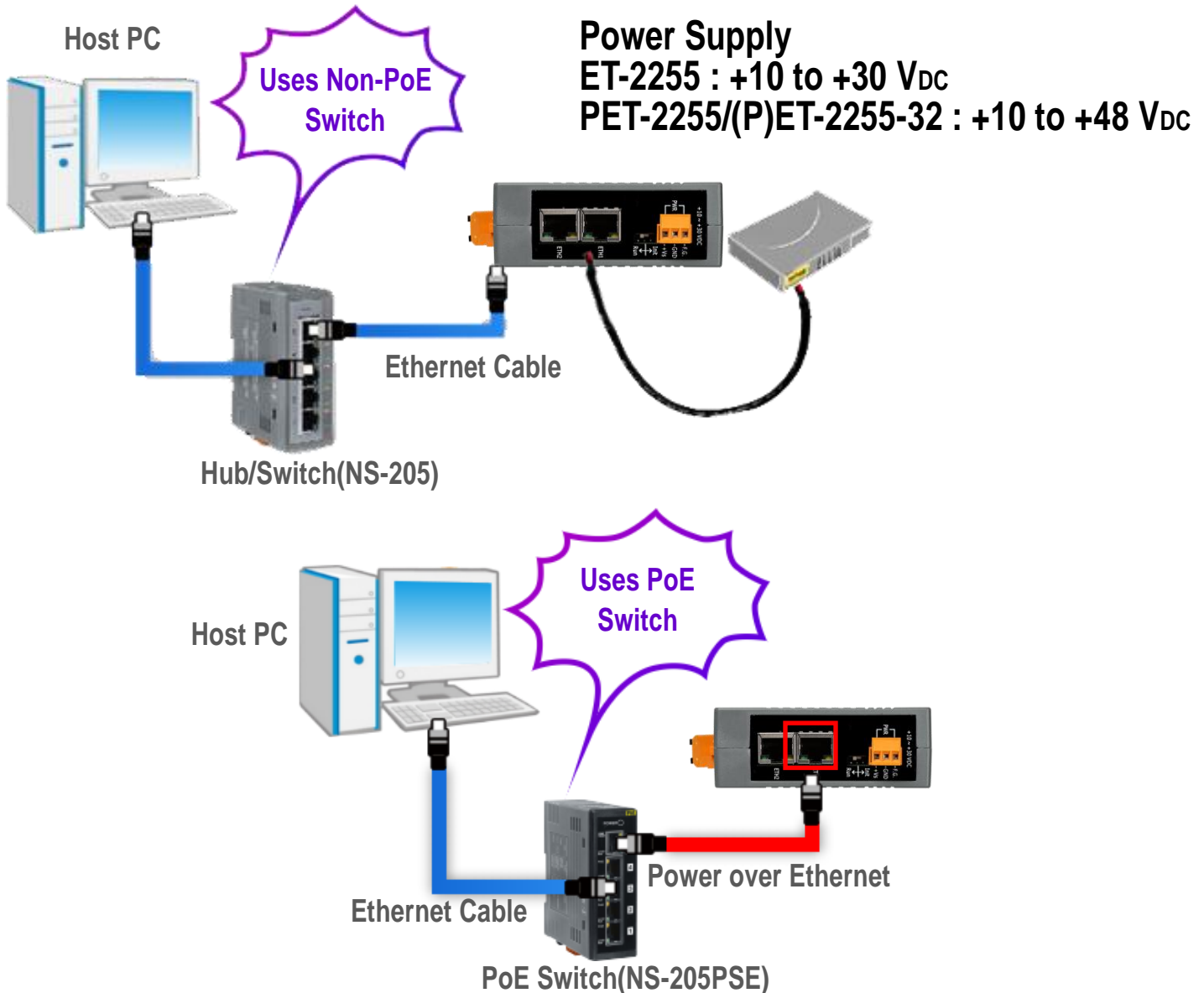
1) Make sure your PC has workable network settings.

Disable or well configure your Windows firewall and Anti-Virus firewall first, else the “**Search Servers**” on **Chapter 3** may not work. (Please contact with your system Administrator)

2) Connect both the (P)ET-2255 and your PC to the same sub network or the same Ethernet switch.

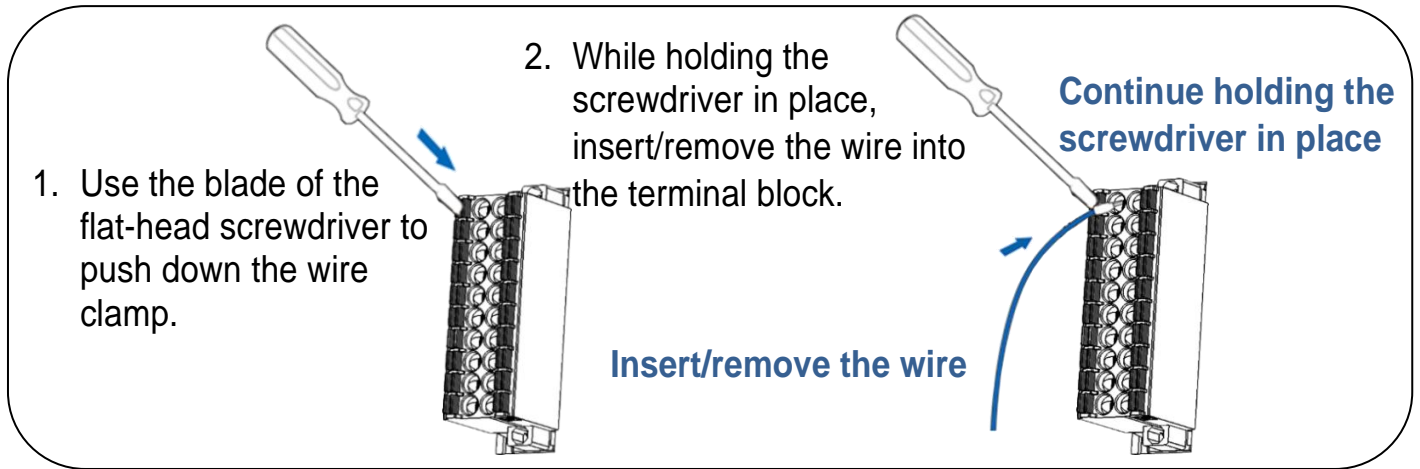
3) Supply power (PoE or +10 to +48 V_{DC}) to the (P)ET-2255. ◦

⚠ Note: Please use the first RJ-45 jack (ETH1) to connect the PoE Switch for powering through PoE. The second RJ-45 jack (ETH2) doesn't support the PoE function.



2 Wiring the DI and DO for Self-test

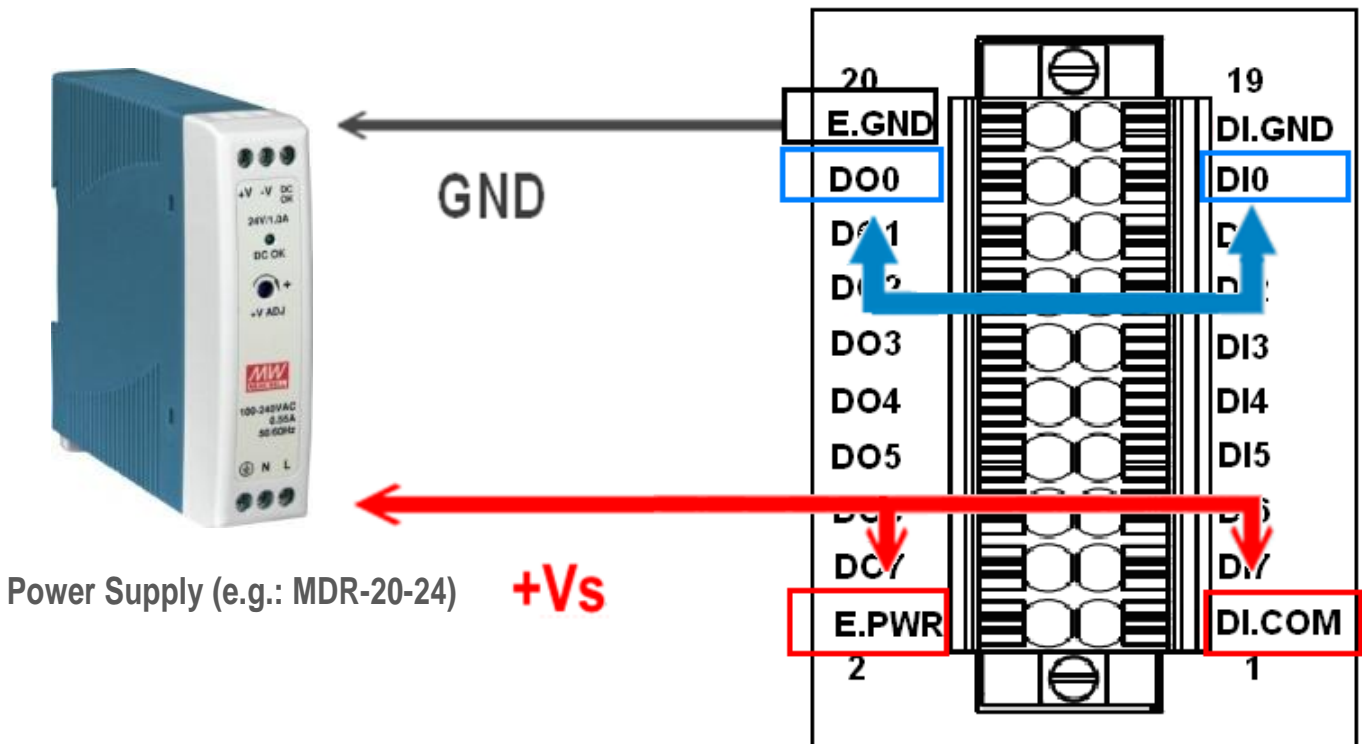
➤ A tip for insert/remove the wire to the connector.



1) Connect the **DI0** to the **DO0**.

2) Connect the **External Power +24V** to the **DI.COM** 及 **E.PWR**

3) Connect the **External Power GND** to the **E.GND**



3 Configuring Network Setting

1) Run the eSearch Utility.

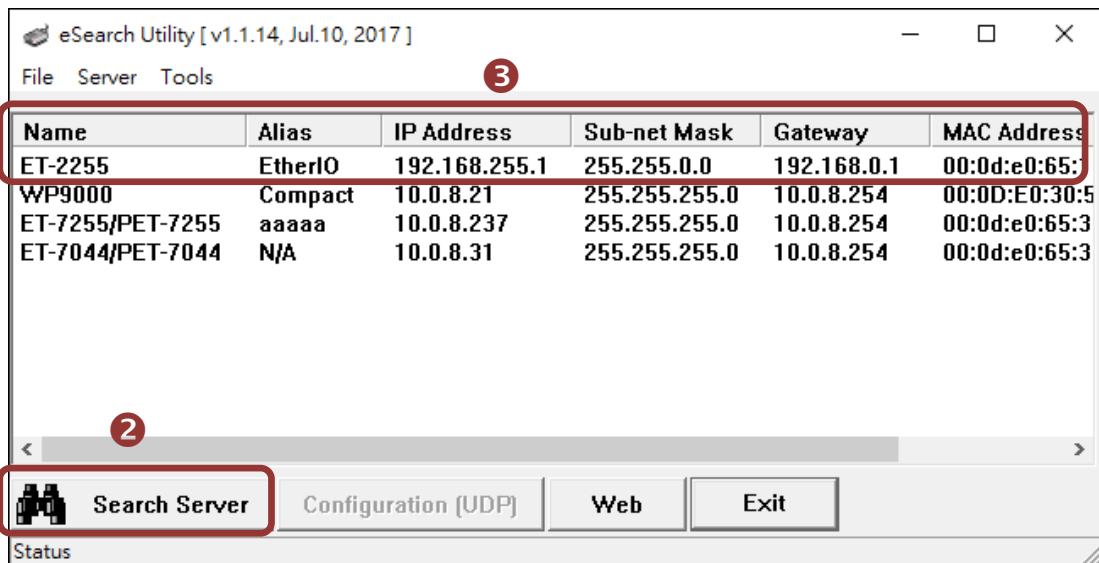
eSearch Utility download link:

<https://www.icpdas.com/en/download/index.php?nation=US&kind1=&model=&kw=eSearch>



2) Click the “Search Servers” to search your (P)ET-2255.

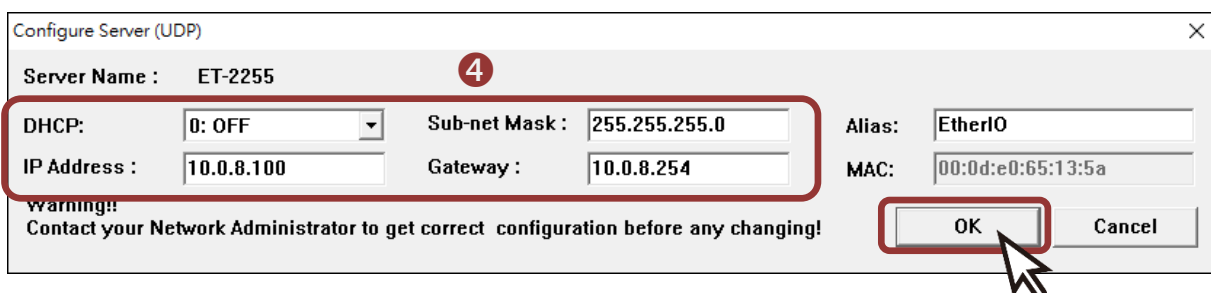
3) Double-click your (P)ET-2255 to configure the settings.



Factory Default Settings of (P)ET-2255:

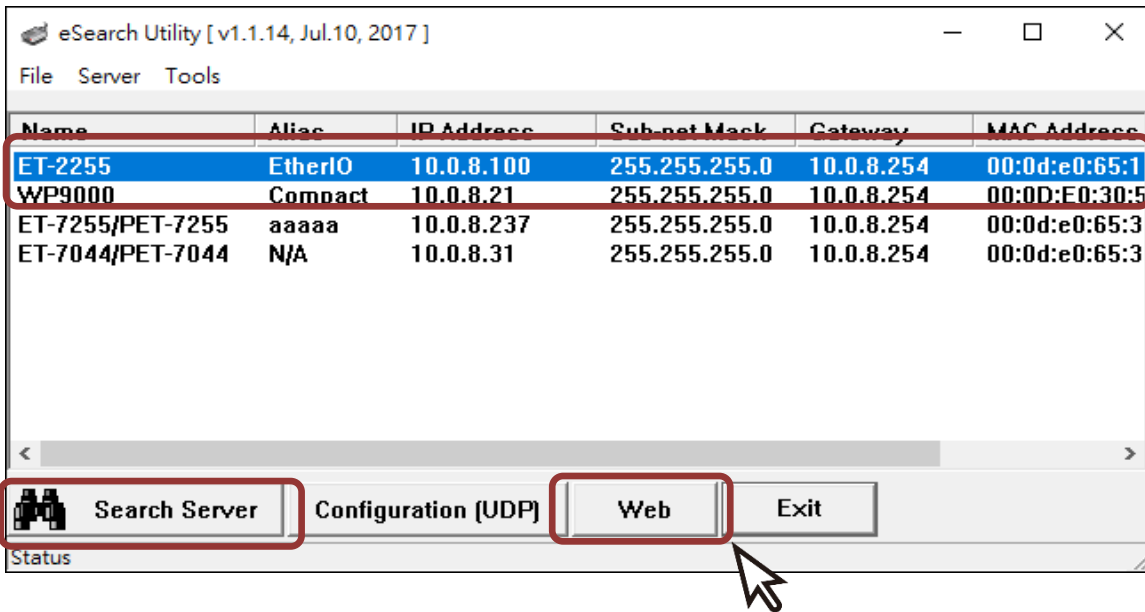
IP Address	192.168.255.1
Subnet Mask	255.255.0.0
Gateway	192.168.0.1

4) Contact your Network Administrator to obtain a correct network configuration (such as **IP/Mask/Gateway**). **Enter the network settings** and click “OK”. **⚠ Note: The (P)ET-2255 will use the new settings 2 seconds later.**

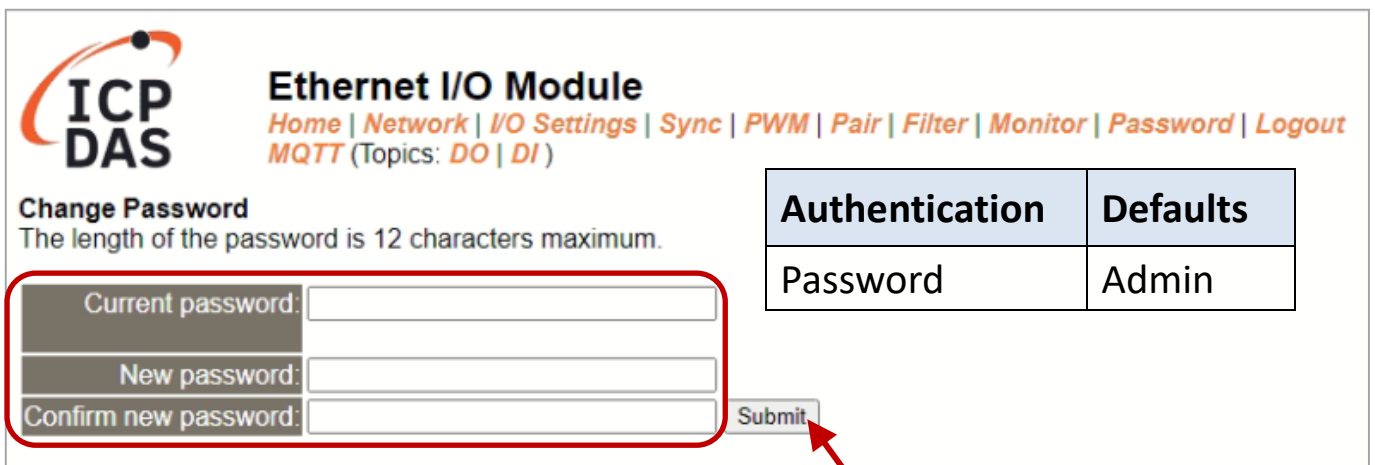


4 Testing your Ethernet I/O Module

- 1) Click “Search Servers” button again to ensure the (P)ET-2255 is working well with new configuration, than click the name of (P)ET-2255 to select it. °
- 2) Click the “Web” button to log in to the web configuration pages.(Or enter the URL address of the (P)ET-2255 in the address bar of the browser.)



- 3) For the first time using the module, you have to change the password and click the “Submit” button.



- 4) Enter the new password in the “Login password” field and click the “Submit” button.



- 5) The “Home” page allows for a simple test to verify the Digital Input and Output functionality.
- 6) In the “Digital I/O” section, click the “DO0” button to turn it ON (Red).
- 7) Verify that the DI0 status is ON(green).

The screenshot shows the ICP DAS Ethernet I/O Module web interface. At the top left is the ICP DAS logo. To its right is the title "Ethernet I/O Module" and a navigation menu with links: Home | Network | I/O Settings | Sync | PWM | Pair | Filter | Monitor | Password | Logout. Below the menu, it says "MQTT (Topics: DO | DI) | SNMP". The main content area displays system information in two columns. The left column includes: Model Name (ET-2255), Firmware Version (v2.4.2 [May.05 2023]), IP Address (10.1.0.119), and TCP Timeout (Socket Watchdog, Seconds) (180). The right column includes: Alias Name (EtherIO), MAC Address (00-0d-e0-ee-22-55), Initial Switch (ON), and System Timeout (Network Watchdog, Seconds) (0). Below the system information is the "Digital I/O (Modbus Address: DO=00000 to 00015, DI=10000 to 10015.)" section. This section contains a row of buttons for DO7, DO6, DO5, DO4, DO3, DO2, DO1, and DO0. Each button has a power icon. The DO0 button is highlighted with a red box and a red circle with the number 6. Below the buttons is a table with columns: DI Channel, value (10000), Counter (30016) / Frequency (30064), High Latched (10032), and Low Latched (10004). The DI0 row is highlighted with a red box and a red circle with the number 7, showing a green status indicator.

DI Channel	value (10000)	Counter (30016) / Frequency (30064)	High Latched (10032)	Low Latched (10004)
DI0	ON (Green)	-	-	-
DI1	-	-	-	-
DI2	-	-	-	-
DI3	-	-	-	-
DI4	-	-	-	-
DI5	-	-	-	-
DI6	-	-	-	-
DI7	-	-	-	-